

DIGI REMOTE MANAGER

Configure, deploy and manage remote assets securely

Digi Remote Manager® (Digi RM) is the technology platform that brings networks to the next level, allowing networks — and the people who manage them — to work smarter. It transforms a multitude of dispersed IoT devices into a dynamic, intelligent network.

Now you can easily configure, deploy, monitor and manage hundreds or even thousands of mission-critical devices from a single point of command.

Edit configurations, update firmware, schedule and automate tasks — all from your desktop, tablet or phone.

You can also easily extend your network at scale with bi-directional, open integration and add intelligence to the edge with custom code, APIs and Python scripts. All the while, its software-defined security diligently safeguards your Digi ecosystem.

Do more with less effort.

Auto-assimilate, update and deploy hundreds of devices with ease by putting Digi's exclusive drag-and-drop grouping technology to work for you. Automations allow you to use Digi RM to schedule and automate common management tasks on a single device or on a group of devices. Schedules can be run once or configured to recur.

Gain valuable insight about the inner workings of your network.

The flexible Digi RM dashboard allows you to put your crucial information where you want it. A selection of pre-built reports with critical device health metrics can be customized to include the data you need most. Configure alerts for specified conditions, or trigger business processes based on events.

Build and maintain an always-on, always-secure network.

Software-defined protection safeguards a secure network and alerts you if key settings go astray. Digi RM automatically maintains security by scanning and fixing any out-of-compliance device configurations in the group.

Connect any device to any cloud platform.

Pre-configured APIs make it quicker and easier for users to access, connect and analyze data collected from devices — with no development required. Cloud connectors integrate device data with industry-leading, third-party analytics and visualization dashboard applications. Connecting is simple. For custom integrations, utilize the rich web service API.

DIGI REMOTE MANAGER

Features and Subscriptions



The command center of your intelligent network

- ✓ Industry-leading cloud and edge tools for rapid device deployment, and easier asset management
- ✓ Automate mass firmware and software updates to enhance functionality, stay in compliance and scale your deployment
- ✓ Access data from edge devices that were previously out of reach
- ✓ Integrate device data through open APIs to gain deeper insights and control with third-party applications
- ✓ Monitor network, device and asset performance and security with bi-directional communications
- ✓ Receive real-time alerts and detailed reports on network health and device conditions

PART NUMBERS	DIGI REMOTE MANAGER®
DIGI-RM-PRM-1YR	Digi Remote Manager Premier — 1-year subscription
DIGI-RM-PRM-3YR	Digi Remote Manager Premier — 3-year subscription
DIGI-RM-PRM-5YR	Digi Remote Manager Premier — 5-year subscription

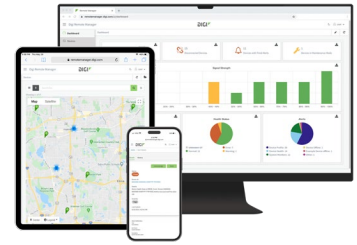
Digi Remote Manager Mobile App

Now it's even easier for users to register their devices via a QR code with the Digi RM mobile app. Once a device is registered in your customer account, you can set a custom configuration to automatically be applied using the Configuration Manager feature. View the overall health of your network as well as individual device status using the Digi RM mobile app.



DIGI REMOTE MANAGER

Detailed Features and Descriptions



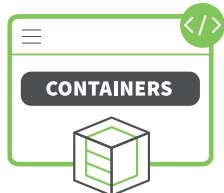
Feature	Description	Digi RM Premier
VIEW AND GROUP DEVICE INVENTORY	Add devices to a group to logically organize and manage them.	✓
UPDATE INDIVIDUAL DEVICE SETTINGS	Configure an individual device by using the built-in configuration interface or loading configuration files.	✓
UPDATE DEVICE SETTINGS IN BULK	Multi-select devices in the list and load configuration files onto them. This is a basic configuration method, not as powerful as automations or Configuration Manager.	✓
CUSTOM CONFIGURATION AND INSTALLATION SUPPORT	Automatically load configuration and firmware onto a device when it first connects to Digi Remote Manager® (Digi RM).	✓
CONFIGURATION MANAGER	A very powerful feature that can create a snapshot of a unit's configuration, firmware and file system contents, then propagate it to other units for the purpose of rolling out a configuration or firmware change and managing security compliance.	✓
UPDATE INDIVIDUAL DEVICE FIRMWARE	Click on a device in a list and upgrade the firmware.	✓
UPDATE DEVICE FIRMWARE IN BULK	Multi-select devices in the list and load firmware onto them.	✓
DEVICE HEALTH METRICS	Devices can push their "health metrics" to Digi RM which can then be used to trigger alarms and show status on a global dashboard, and can be viewed in detail on a device's dashboard to aid troubleshooting.	✓
ALARMS	Configure alarms to trigger based on health metrics, connection status, data usage, configuration status and other factors.	✓
MAPPING	See the location of your devices in real time in the Devices page in Digi RM.	✓
FILE SYSTEM ACCESS	Use the File Management page in Digi RM to access and load files onto your devices.	✓
NOTIFICATION CENTER	Get notified of all new firmware updates and any relevant information to your account.	✓
SMS REMOTE COMMANDS/OUT-OF-BAND MANAGEMENT	Supports sending and receiving SMS messages between Digi RM and a Digi RM-registered device.	✓
AUTOMATICALLY MANAGE DEVICE SECURITY COMPLIANCE	Use the Configuration Manager feature to ensure that the configuration, firmware and files loaded onto a device remain compliant with the "gold standard." Configuration Manager can be configured to create an alarm and/or correct noncompliance if a device is found not to be compliant. This important security feature prevents outside tampering.	✓
SM/UDP	The SM/UDP (Short Message/User Datagram Protocol) feature allows devices to leverage the very small data footprint of Digi RM SM protocol over UDP.	✓
CARRIER INTEGRATION	Utilize information from cellular carriers to facilitate SIM provisioning, SIM activation/deactivation, data usage reporting and alerting (from carrier rather than device perspective).	✓
ON-DEMAND REPORTS	Create PDF reports containing health metrics and other data.	✓
AUTOMATIONS	A very powerful mechanism to schedule and automate complex tasks to be carried out on devices or groups of devices — immediately, at a specific time and date, or on a recurring basis.	✓
SUB-ACCOUNTS	Create sub-accounts that can be managed from the parent account. Sub-accounts allow the parent account owner to restrict which device sub-accounts users can access.	✓
WEB SERVICE APIS	Link programmatically to Digi RM using RESTful web service APIs. This facilitates the ability to send data from Digi RM (or devices connected to Digi RM) to third-party systems such as AWS or Azure, and connect Digi RM to a customer's own CRM or management platforms.	✓
DATA STREAMS	Allows you to store time-series data in Digi RM that can be retrieved later by an external application using web services.	✓

*Digi Remote Manager subscriptions are available and licensed per device. Sign up for a free 90-day trial at shop.digi.com.

DIGI REMOTE MANAGER

Value-Added Services

Digi Containers



DIGI REMOTE MANAGER ENABLES DEPLOYMENT OF CUSTOM APPLICATIONS VIA CONTAINERS

Digi Containers simplify and centralize the process of building, deploying and running custom applications on devices managed with **Digi Remote Manager** as the central portal. Containers with custom programs or Python applications can be loaded via Digi RM on any device running the **Digi Accelerated Linux** operating system (DAL OS).

As an add-on service to Digi Remote Manager, Digi Containers are a powerful capability implemented via Lightweight Linux Containers (LXC). LXC tools enable developers to package up a custom application, with its dependencies and configuration, into a lightweight, portable bundle that shares only the running kernel with the host device.

Digi WAN Bonding



RESILIENT CONNECTIVITY AND MAXIMUM PERFORMANCE ACROSS MULTIPLE CONNECTIONS

Digi WAN Bonding combines multiple connections into a seamless and resilient connectivity solution that ensures optimal performance and maximum uptime anywhere around the world.

Digi devices provide a range of connectivity options including cellular failover with features such as **Digi SureLink**[®], policy-based routing and interface bonding. These features are excellent at preventing any external network failures from causing downtime.

Digi Mobile VPN



SECURE VPN SERVICE WITH PERSISTENT CONNECTIVITY FOR CRITICAL COMMUNICATIONS

Digi Mobile VPN enables users to create a secure connection between their data centers and the Digi router, including connected (wired or wireless) edge devices. Digi Mobile VPN offers persistent, secure connectivity, utilizing **Digi Remote Manager** as the central portal for orchestrating the mobile VPN setup and deployment.

This functionality is particularly important for public sector, emergency response and mass transit applications that require secure and reliable connections in first responder vehicles, buses, trains and paratransit vans.

PART NUMBERS

DIGI REMOTE MANAGER VALUE-ADDED SERVICES*

VALUE-ADDED SERVICES AND SUBSCRIPTIONS

DIGI-RM-PRM-CS	Digi Containers subscription — 1-year subscription
DIGI-SRV-WB-TIER1-1YR	Digi WAN Bonding subscription with 100 Mbps max throughput — 1-year subscription
DIGI-SRV-WB-TIER2-1YR	Digi WAN Bonding subscription with 200 Mbps max throughput — 1-year subscription
DIGI-SRV-WB-TIER3-1YR	Digi WAN Bonding subscription with 1 Gbps max throughput — 1-year subscription
DIGI-SRV-MVPN-TIER1-INSTALL	Digi Mobile VPN installation, less than 500 routers (one-time fee, installation for subscriptions up to 500 routers)
DIGI-SRV-MVPN-PR-TIER1-1YR	Digi Mobile VPN subscription (Primary Responder), less than 500 routers — 1-year subscription
DIGI-SRV-MVPN-TIER1-1YR	Digi Mobile VPN subscription, less than 500 routers — 1-year subscription

*Digi Containers, Digi WAN Bonding and Digi Mobile VPN are available as a subscription added to Digi Remote Manager Premier.



For more information about Digi Remote Manager, visit www.digi.com/digi-remote-manager.

877-912-3444 | 952-912-3444

